

Nanyang CONNECTS

April 2018



MCI (P) 099/07/2017



CHUA CHU KANG THE NEW OLD TOWN

A once quiet village transforms into a vibrant estate with modern amenities and a close-knit community.



FOCUS
Livening Up
Our Home

04



UP CLOSE
Making Lifts
Safer

06



**TALK OF
THE TOWN**
Memories of Old
Chua Chu Kang

07

Win! STAND A CHANCE TO WALK AWAY WITH A GOODIE BAG WORTH \$50, INCLUSIVE OF A \$20 CAPITALAND VOUCHER

SEE BACK PAGE FOR DETAILS



Dear Residents and Friends,

I hope that you've had a great start to 2018! Personally, in line with our national drive towards healthier living, I hope to join others with a similar resolution, to lead a more active and healthy lifestyle this year. As we look at various projects around Chua Chu Kang Town, we also hope to add on and develop our amenities to promote active lifestyles for all ages, young and old.

Our town is transforming rapidly. We have several new Build-To-Order (BTO) estates that are now part of our town, and more residents will be joining us in the year ahead. The new estates also bring a wide range of options and amenities to us such as new amenities, food courts, supermarkets and shops. In some areas, new bus services have also been added to enhance connectivity within the town to these amenities.

In estates such as the Chua Chu Kang area, we look to enhanced connectivity with the development of a new bus interchange and the addition of the Jurong Regional Line. In Jurong West, the recently completed Jurong West

Hawker Centre offers a wide variety of dishes from traditional hawker fare to contemporary fusion food. In the Bukit Batok area, the completion of two Family and Fitness Hubs provides residents with facilities that can be enjoyed by the entire family.

The Town Council also continually looks to improve the estate. We have several lift replacement programs in place to replace and upgrade our old lifts, including the Selective Lift Replacement Programme (SLRP). Our new lifts will provide greater security and energy efficiency. Improvements include vision panels that allow you to see through the lift doors, as well as infra-red and motion sensors that enhance the safety of lift passengers.

On that note, I would like to thank you for your continued support as we continue to develop and rejuvenate our town.

ZAQY MOHAMAD
CHAIRMAN
CHUA CHU KANG TOWN COUNCIL

A FRESH BEGINNING

Let us as a community start the year on the right note.

亲爱的居民朋友，

祝您在2018年里展翅高飞!

就个人而言，也配合我国迈向更健康生活的愿景，我希望在来年能和志同道合的朋友一起参与活动，活出更活跃和健康的人生。正当我们在探讨蔡厝港市镇的各项计划的同时，我们也希望能添加和开发更多适合男女老少各年龄层使用的设施来推广活跃人生。

我们的市镇正在迅速改变，有多个订购组屋 (Build-To-Order, 简称BTO) 在我们的市镇兴建，未来也会有更多的居民加入我们。新的组屋区也会为居民带来更多的选择和设施，例如新的设施、食阁、超市和商店。有些地区也会有新的巴士服务路线，以加强居民往返设施和住家的便利。

如位于蔡厝港区的组屋，我们期望设立新的巴士转换站和增添裕廊区域线以方便居民往返各处。在裕廊西，刚竣工的裕廊西小贩中心提供包罗万象的餐饮选择，从传统

的小贩美食到结合不同风味的现代“融合”料理 (fusion food)。在武吉巴督区，刚完工的两个家庭和健身中心里的设施将能为居民全家大小带来欢乐。

市镇理事会会继续改善组屋区。我们为老旧的电梯进行电梯更换计划，包括选择性电梯更换计划 (Selective Lift Replacement Programme, 简称SLRP)。新的电梯会更安全和节能。其中，电梯门会有玻璃窗，让您看到电梯里的状况；电梯门也设有红外线和行动传感器，以提高电梯使用者的安全。

市镇理事会继续通过各种方式改善组屋区的生活环境。我们为多座组屋安排了选择性电梯更换计划 (SLRP)，以更换和提升现有陈旧的电梯，确保新电梯能为居民提供更安全和节能的服务。新电梯设有透视窗，让居民可以看清电梯里面和外面的情况，也有红外线和动作传感器，以加强电梯使用者的安全。

我也要借此机会感谢您持续以来的支持，让我们继续发展和翻新我们的市镇。

Para Penduduk dan Rakan Yang Dihormati,

Saya harap anda telah mulakan 2018 secara hebat!

Secara peribadi, sejajar dengan usaha negara ke arah kehidupan yang lebih sihat, saya berharap untuk menyertai mereka yang berkongsi azam yang sama, untuk menjalani gaya hidup yang lebih aktif dan sihat pada tahun ini. Sambil kita melaksanakan pelbagai projek di sekitar Bandar Chua Chu Kang, kami juga berharap untuk menambah dan membangunkan prasarana yang ada bagi menggalakkan gaya hidup aktif untuk semua peringkat usia, muda dan tua.

Bandar kita sedang pesat berubah. Beberapa buah estet Bina Ikut Tempahan (BTO) baru kini menjadi sebahagian daripada bandar kita, dan lebih ramai penduduk akan menyertai kita pada tahun hadapan. Estet-estet baru ini juga menawarkan pelbagai pilihan dan kemudahan kepada kita seperti pusat makanan, pasar raya dan kedai-kedai baru. Perkhidmatan bas baru juga telah ditambah di beberapa buah kawasan bagi mempertingkatkan keterhubungan di sekitar bandar ke kemudahan-kemudahan ini.

Di estet-estet seperti Chua Chu Kang, kami berusaha untuk mempertingkatkan keterhubungan dengan membangunkan sebuah pusat pertukaran bas baru serta penambahan Laluan Serantau Jurong. Di Jurong West, Pusat Penjaja Jurong West yang baru siap menawarkan pelbagai jenis hidangan daripada makanan penjaja tradisional kepada makanan gabungan kontemporari. Di kawasan Bukit Batok, dua buah Hab Keluarga dan Kecergasan yang baru dibina menyediakan para penduduk dengan kemudahan yang boleh dinikmati oleh seisi keluarga.

Majlis Bandaran terus berusaha untuk memperbaiki estet. Kami sedang menjalankan beberapa program menggantikan dan mempertingkatkan lif-lif lama, termasuk Program Penggantian Lif secara Selektif (SLRP). Lif-lif baru kami akan memberikan keselamatan dan kecekapan tenaga yang lebih tinggi. Kerja-kerja peningkatan termasuk panel melihat yang membolehkan anda melihat menerusi pintu lif serta pengesan infra-merah dan pergerakan untuk meningkatkan keselamatan penumpang lif.

Majlis Bandaran juga terus berusaha untuk memperbaiki estet. Kami sedang menjalankan beberapa program menggantikan dan mempertingkatkan lif-lif lama, termasuk Program Penggantian Lif secara Selektif (SLRP). Lif-lif baru kami akan memberikan keselamatan dan kecekapan tenaga yang lebih tinggi. Kerja-kerja peningkatan termasuk panel melihat yang membolehkan anda melihat menerusi pintu lif serta pengesan infra-merah dan pergerakan untuk meningkatkan keselamatan penumpang lif.

Di samping itu, saya ingin mengucapkan terima kasih di atas sokongan anda yang berterusan sambil kami terus membangunkan dan mempertingkatkan bandar kita.

A TRANSFORMING CHUA CHU KANG



New Lifts

with vision panels and motion sensors

அன்பார்ந்த குடியிருப்பாளர்கள் மற்றும் நண்பர்களுக்கு,

2018 உங்களுக்கு சிறப்பாகத் தொடங்கியிருக்கும் என்று நம்புகிறேன்!

ஆரோக்கியமான வாழ்வை நோக்கிய நமது தேசத்தின் முயற்சிக்கு இணங்க, இந்த ஆண்டில் மேலும் துடிப்பான மற்றும் ஆரோக்கியமான வாழ்க்கைமுறையை மேற்கொள்வதற்கு நாம் அனைவரும் உறுதியேற்போம் என்று நம்புகிறேன். சுவா சூ காங் நகரத்தைச் சுற்றி நடைபெறும் பல்வேறு செயல்திட்டங்களைக் காணும் போது, அவை இணையர்கள் மற்றும் பெரியவர்கள் உள்பட எல்லா வயதின்ருக்காகவும் கருகூறப்பான வாழ்க்கைமுறைகளை ஊக்குவித்து வளர்ப்பதற்கு நமது வசதிகளை மேலும் மேம்படுத்தும் என்றும் நாங்கள் நம்புகிறோம்.

நமது நகரம் அதிவேகமாக மாறிவருகிறது. தற்சமயம் நமது நகரத்தின் அங்கமாக இருக்கின்ற பல்வேறு புதிய தேவைக்கேற்பக் கட்டிடத்தரப்பும் (BTO) குடியிருப்புகளையும் நாம் கொண்டுள்ளோம். மேலும், இந்த ஆண்டில் மேலும் பல குடியிருப்பாளர்கள் நம்முடன் இணைய உள்ளனர். புதிய வசதிகள், உணவு நிலையங்கள், பேரங்காடிகள் மற்றும் கடைகள் போன்ற பல்வேறு வகையான விருப்பத்தேர்வுகளையும் கூட இப்புதிய குடியிருப்புகளையும் வழங்குகின்றன. சில பகுதிகளில், இத்தகைய வசதிகளை நகரத்தினுள் அணுகுவதற்குக் கூடுதலாக புதிய பேருந்துச் சேவைகளும் கூட தொடங்கப்பட்டுள்ளன.

சுவா சூ காங் பகுதி போன்ற குடியிருப்புகளில், புதிய பேருந்து நிலையம் மற்றும் கூடுதலாக ஜூரோங் பிராந்திய வழித்தடத்தின் உருவாக்கத்துடன் மேம்படுத்தப்பட்ட இணைப்பை நாம் எதிர்பார்க்கலாம். ஜூரோங் மேற்கில், சமீபத்தில் நிறைவுசெய்யப்பட்ட ஜூரோங் மேற்கு உணவங்காடி நிலையமானது, பாரம்பரிய உணவுவகைகள் முதல் சமகாலத்தியக் கலப்பு உணவு வரை பல்வேறு வகையான உணவுவகைத் தேர்வுகளை வழங்குகிறது.

புக்கிட் பாத்தோக் பகுதியில், நிறைவுசெய்யப்பட்டுள்ள இரண்டு குடும்ப மற்றும் உடற்பயிற்சி மையங்கள், மொத்தக் குடும்பமும் மகிழ்ச்சியுடன் அணுபவிக்கக்கூடிய வசதிகளைக் குடியிருப்பாளர்களுக்கு வழங்குகின்றன.

நகர மன்றம் குடியிருப்புகளையும் மேம்படுத்துவதற்கான வழிகளைத் தொடர்ந்து ஆராய்ந்து கொண்டிருக்கிறது. நமது பழைய மின்தூக்கிகளை மாற்றிவிட்டு, அதற்குப் பதிலாகப் புதிய மின்தூக்கிகளை நிறுவ்வதற்கு, குறிப்பிட்ட மின்தூக்கி மாற்றுத் திட்டம் (SLRP) உள்ளிட்ட பல்வேறு மின்தூக்கி மாற்றுத் திட்டங்களை நாம் கொண்டுள்ளோம். நமது புதிய மின்தூக்கிகள் நமக்கு அதிகப் பாதுகாப்பையும், மின்சாரச் சேமிப்பையும் வழங்கும். மின்தூக்கியைப் பயன்படுத்துபவர்களின் பாதுகாப்பை அதிகரிப்பதற்கு, மின்தூக்கிக் கதவு வழியாகத் தெளிவாகப் பார்ப்பதற்கு உங்களை அனுமதிக்கின்ற காட்சிப் பலகங்கள் (விஷன் பேனல்கள்) மற்றும் இன்ஃப்ரா-ரெட் மற்றும் நகர்ச்சி உணரிகள் மேம்பாடுகளில் உள்ளடங்குகின்றன.

நகர மன்றம் குடியிருப்புகளையும் மேம்படுத்துவதற்கான வழிகளையும் தொடர்ந்து ஆராய்ந்து கொண்டிருக்கிறது. நமது பழைய மின்தூக்கிகளை மாற்றிவிட்டு, அதற்குப் பதிலாகப் புதிய மின்தூக்கிகளை நிறுவ்வதற்கு, குறிப்பிட்ட மின்தூக்கி மாற்றுத் திட்டம் (SLRP) உள்ளிட்ட பல்வேறு மின்தூக்கி மாற்றுத் திட்டங்களை நாம் கொண்டுள்ளோம். நமது புதிய மின்தூக்கிகள் நமக்கு அதிகப் பாதுகாப்பையும், மின்சாரச் சேமிப்பையும் வழங்கும். மின்தூக்கிக் கதவு வழியாகத் தெளிவாகப் பார்ப்பதற்கு உங்களை அனுமதிக்கின்ற காட்சிப் பலகங்கள் (விஷன் பேனல்கள்), அதுமட்டுமின்றி மின்தூக்கியைப் பயன்படுத்துபவர்களின் பாதுகாப்பை அதிகரிக்கின்ற இன்ஃப்ரா-ரெட் மற்றும் நகர்ச்சி உணரிகள் (மோஷன் சென்சார்கள்) உள்ளிட்ட மேம்பாடுகள்.

நமது நகரத்தை நாங்கள் தொடர்ந்து மேம்படுத்துவதற்கும், புத்துயிரிட்டுவதற்கும் நீங்கள் அளித்துவரும் ஆதரவுக்கு நன்றி தெரிவித்துக்கொள்ள விரும்புகிறேன்.

New Amenities

including supermarkets, playgrounds and food courts.



New Neighbours!



GATHERINGS

TOGETHER AS ONE

Chua Chu Kang residents bonded over these end-of-year activities.

An inclusive Mid-Autumn Festival celebration involving residents of different races.



Thumbs up to staying active.



Young residents leading the B.I.G. Farm Walk and Run.

COMMUNITY EVENTS are a great way for residents to connect and have fun with their families and neighbours. We've had several over the past year. Here are two highlights held in the last quarter of 2017:

A MID-AUTUMN TO REMEMBER

Last year's Mid-Autumn Festival celebrations was a joyous affair with various gatherings held around Keat Hong. One of them was a joint party by Keat Hong Zone 9, 10 and 11 Residents' Committees (RCs) on 30 September 2017. Attended by residents of different races, the festivities kicked off at the Multi-Purpose Hall outside Block 483 Choa Chu Kang Ave 5. Residents had fun playing games such as table soccer, mini basketball hoops and Nerf gun shootout at the different booths, before going on a lantern walk around the neighbourhood.

Joining the residents on the trail lit by colourful lanterns was Chairman of Chua Chu Kang Town Council and MP for Chua Chu Kang GRC (Keat Hong) Mr Zaqy Mohamad.



Bonding over game of table soccer.

RUNNING IN NATURE

Thousands of people woke up early on 8 October 2017 to take part in the sixth annual B.I.G. Farm Walk and Run, co-organised by Chua Chu Kang GRC and Hong Kah North SMC, in conjunction with the One Community Fiesta. Flagging off the participants at the starting line on Brickland Road were Minister for Health and MP for Chua Chu Kang GRC (Chua Chu Kang) Mr Gan Kim Yong; Senior Parliamentary Secretary for the Ministry of Education and the Ministry of Trade and Industry, Mayor of South West District and MP for Chua Chu Kang GRC (Bukit Gombak) Ms Low Yen Ling; and MP for Chua Chu Kang GRC (Nanyang) Mr Yee Chia Hsing.

Participants took a breather from the hustle and bustle of city life, and ran or walked with their family and friends on the scenic farm trail along the Sungei Tengah area. Grassroots volunteers and ITE College West students also entertained the crowd with music and dance performances. 

WALK OR RUN

The B.I.G. Farm Walk and Run 2017 consisted of three different categories:

- 8km Farm Run
- 3km Farm Walk
- Kids Dash (400m for children aged 6 and below / 816m for children aged 7 to 12)



ALL HANDS ON DECK

Residents joined hands to clean their estates as part of My Block Sparkles 2017.



Minister of Health and MP for Chua Chu Kang GRC (Chua Chu Kang) Mr Gan Kim Yong with representatives of the winning blocks.

Below: Ensuring that common corridors are not blocked by clutter.



LITTER IN OUR COMMON areas is a problem that often requires a community effort to tackle. The "many-hands" approach by residents and grassroots leaders was on full display across Chua Chu Kang, thanks to the annual My Block Sparkles competition. Organised by Chua Chu Kang Town Council, the year-long competition assesses how clean blocks are. Judges also take into account residents' efforts to encourage civic-mindedness and good social habits. 



The Winners are....

1 st place	Block 104, Teck Whye Lane (Chua Chu Kang Zone 3 RC)
2 nd place	Block 841, Jurong West Street 81 (Nanyang Zone 4 RC)
3 rd place	Block 391, Bukit Batok West Avenue 5 (Bukit Gombak Goodview Garden RC)
Consolation	Block 305, Bukit Batok Street 31 (Hong Kah North Zone 3 RC)
Consolation	Block 406, Chua Chu Kang Avenue 3 (Keat Hong Zone 8 RC)



Senior Minister of State, Ministry of the Environment and Water Resources & Ministry of Health and MP for Hong Kah North SMC Dr Amy Khor at the My Block Sparkles award ceremony.



Nanyang residents finding out more about the My Block Sparkles campaign.



MP for Chua Chu Kang GRC (Nanyang) Mr Yee Chia Hsing with representatives of a winning block.



LIVENING UP OUR HOME

New amenities for the Nanyang community to enjoy together.



A GREENER NEIGHBOURHOOD
MP for Chua Chu Kang GRC (Nanyang) Mr Yee Chia Hsing joined residents for Tree Planting Day on 3 December 2017. The event was held to mark Clean and Green Singapore 2017.



"Greetings residents!
I hope that 2018 has been a good year so far for all of you. We have certainly hit the ground running, with various improvement works being completed in Nanyang, most notably, the Pioneer Polyclinic at Jurong West Street 61. Opened in July 2017, it provides residents with quality, integrated and seamless care closer to their homes. I encourage those above 60 to go for their health check at Pioneer Polyclinic. Here's wishing all residents good health and happiness for the year ahead."

YEE CHIA HSING, MP FOR CHUA CHU KANG GRC (NANYANG)

MEET-THE-PEOPLE SESSION

Every Monday, 8pm, Nanyang
(except public holidays)
Blk 953 Jurong West Street 91
#01-603
Singapore 640953
Tel: 6791 0518
Fax: 6792 3908
Email: mp@nanyangcc.org.sg



ELDERLY-FRIENDLY FITNESS EQUIPMENT have been introduced near Blocks 967A and 967B along Jurong West Street 91. Divided into four stations, the exercise corner provides seniors with a holistic workout, while also providing a space for them to bond with one another. The exercise equipment are also designed to be gentler on muscles to prevent seniors from over-exerting themselves. Studies have shown that such social interactions do wonders for the mental health of the elderly.

IT'S PLAYTIME!

For many young residents, time spent at the playground is the favourite part of their day. Thanks to two new playgrounds, young ones in Nanyang's newest BTO projects at Blocks 967A and 967B have more options when choosing where to play "catching" or "Police-and-Thief". The first playground features a rope jungle gym, which hones motor skills and improves coordination. The second, just a stone's throw away, comes with evergreen favourites like a slide and a standing roundabout. It is located next to the senior citizen fitness corner to promote intergenerational bonding.

MORE FOOD CHOICES

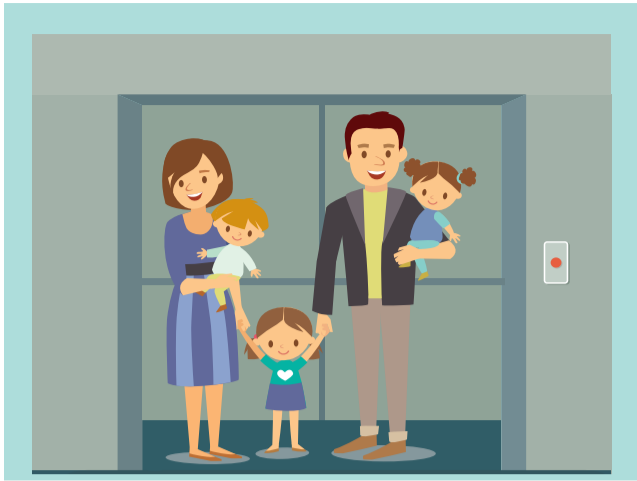
The Jurong West Centre Hawker Centre at Jurong West Street 61, near Pioneer Mall, opened for business in October 2017. With 34 different food stalls, residents now have more dining options within their estate. ∞



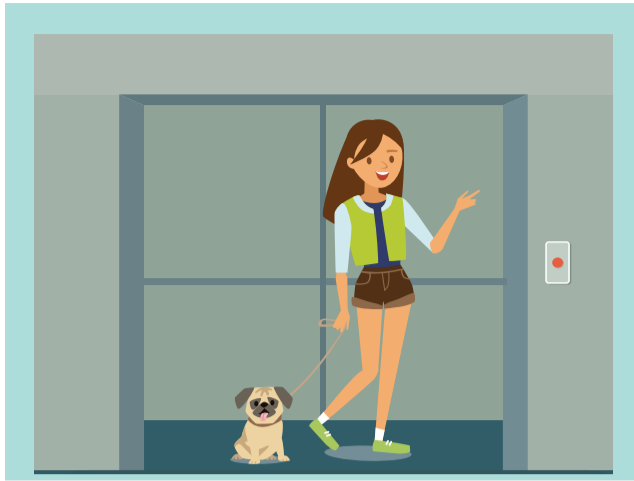
Nanyang held the MyNiceHome Roadshow at Golden Lavender on 18 June 2017. The informative event was a platform for residents to learn more about their new estate, as well as pick up useful renovation tips provided by HDB.



Residents of Golden Lavender getting an insight into life at Nanyang.



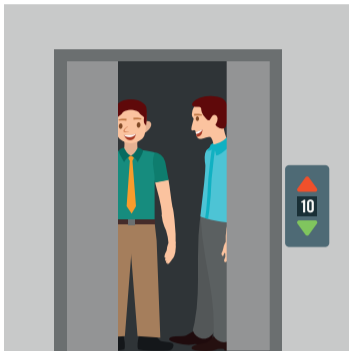
DO accompany young children when they take the lift, and ensure they do not place their hands on lift doors.



DO keep your pet on a leash and ensure that it remains inside the lift especially as the lift doors close.



DO Keep lifts clean from litter and urination.



TIPS FOR BETTER LIVING

ELEVATOR ETIQUETTE

Stay safe when using lifts by observing these do's and don'ts.



LIFTS ARE AN ESSENTIAL MODE OF VERTICAL TRANSPORTATION.

It is vital then that those in our estate are safe and reliable. To ensure this, Chua Chu Kang Town Council has embarked on the Selective Lift Replacement Programme (SLRP) to replace ageing lifts.

As the new lifts operate on a different system from the old lifts, to ensure the safety and the convenience of our residents, SLRP is carried out in batches. Works commenced on the first batch of blocks selected for the SLRP in October 2017 and will be completed by 3rd Quarter 2018.

There are a total of four batches and each batch takes an estimated eight to nine months to complete. We will continue to provide regular updates to keep you informed of the progress of this programme. During this time, residents may be inconvenienced by noise and dust. However, contractors will hoard up their area of work to minimise such inconveniences.

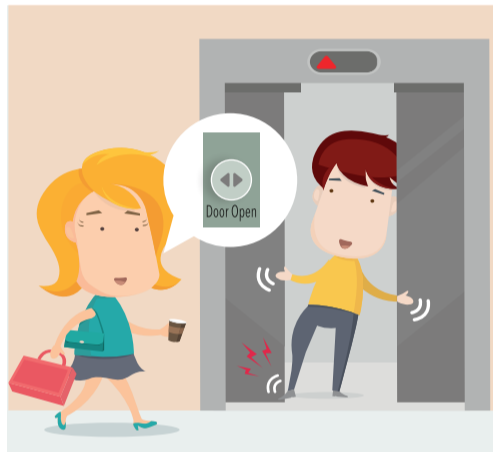
DID YOU KNOW?



Lifts in Chua Chu Kang are serviced at least **once a month.**



There are **over 1,500 lifts** in Chua Chu Kang town.



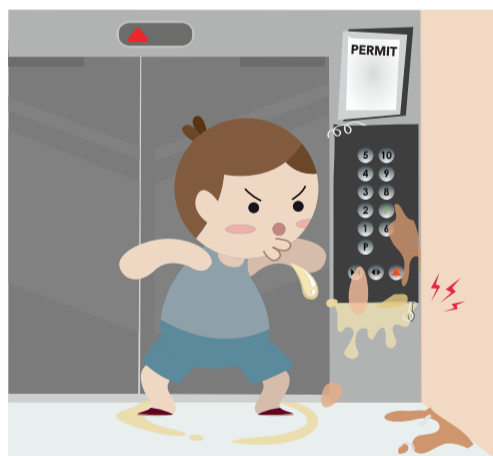
DO NOT use any part of the body including hands and legs to stop the lift doors from closing. Press the "Door Open" button instead.



DO NOT attempt to pry open the lift doors when the lift stalls. Instead, press the alarm button and wait for rescue.



DO NOT stand near the lift doors. Long skirts, leashes, bag straps and other objects may get caught in the door.



DO NOT abuse the lift panel, for example, banging of buttons or spitting on the panel.



DO NOT jump or play in the lift. This may cause the lift to stall.



DO NOT remove or vandalise the Permit to Operate (PTO) that are installed in lifts.



Going Up!

With the SLRP, residents can look forward to lifts that are more:

- 1 Energy-efficient:** As they are fitted with more energy-efficient motors, newer lifts will reduce our carbon footprint
- 2 Secure:** CCTVs and vision panels enhance security
- 3 Comfortable:** Modern designs provide a comfortable ambience
- 4 Accessible:** Illuminated braille push buttons provide greater visibility

CHUA CHU KANG TRANSFORMATION

OUR HOME THROUGH THE YEARS

A look back at Chua Chu Kang's transformation from a sleepy *kampung* to a lively and modern neighbourhood.



Credit: R Browne Collection, courtesy of National Archives of Singapore

CHUA CHU KANG VILLAGE, IN THE LATE 1940S



Credit: Ministry of Information and the Arts Collection, courtesy of National Archives of Singapore

New Town

In the 1980s, the estate was developed into a new town and by the mid-1990s, the Chua Chu Kang that we know today began to take shape. As flats were built, new bonds were forged in the community, thanks to shared amenities. Eventually, the *kampung* spirit of yesteryears was revived.

Chua Chu Kang Village was surrounded by lush forests, in which tigers commonly roamed. This photo, taken in the late 1940s, shows a row of attap houses in Lam San Village near Chua Chu Kang Road.



Credit: Housing and Development Board Collection, courtesy of National Archives of Singapore

Up till the 1980s, the Chua Chu Kang area was an important source of food for Singapore. The Ama Keng area (near present-day Tengah Airbase) came to be known as the "land of chicken farms" because of the large number of poultry farms in the village. Other farmers in the village grew fruit and vegetables, as seen in the picture on the left.



Credit: Ronni Pinsler Collection, courtesy of National Archives of Singapore

SPRUCING UP THE TOWN

Chua Chu Kang Town Council lends a helping hand to residents in their spring cleaning efforts.




Helping residents to clear bulky items.

AS RESIDENTS WELCOMED 2018 and the Year of the Dog, some had help in their spring cleaning from the Town Council. The organisation offered its annual spring cleaning service from

18 December 2017 to 14 February 2018. The service cleared residents' unwanted bulky items from designated areas free of charge*.

Signs were placed at the void decks of HDB blocks to indicate where residents could leave their bulky items. Those with plans to declutter their homes also used the service, as there were no cap on the number of things that could be discarded during that period. Officers from the Town Council also ensured that designated areas were kept tidy and that rubbish was disposed in proper receptacles.

Items that were obstructing common areas of blocks were also removed. Besides being an eyesore, such items are a fire hazard and can hinder smooth evacuation during emergencies. 

“ THIS INITIATIVE WAS ROLLED OUT IN 2013 AS AN ADDED SERVICE TO OUR RESIDENTS, AS THE END OF THE YEAR IS OFTEN WHEN MANY FAMILIES DO THEIR SPRING CLEANING. AFTER RECEIVING NUMEROUS POSITIVE FEEDBACK ON THE INITIATIVE, WE DECIDED TO OFFER THIS SERVICE YEARLY .”

MR CLARENCE TAN,
General Manager, Chua Chu Kang Town Council.

*The service is only available to HDB residents of Chua Chu Kang Town Council.

STAYING GROUNDED

THIS IS WHERE I CALL HOME

Being a grassroots volunteer has enabled Chua Chu Kang resident Ms Summer Chan to discover the true meaning of *kampung* spirit and be more appreciative of her neighbourhood.



DESPITE HER BUSY SCHEDULE, as a property agent and mother of three — her elder son is 12 and her twin daughters seven — Ms Summer Chan, 40, decided to step up as a grassroots volunteer in 2011. “Volunteering at community events has opened my eyes to what’s involved in addressing residents’ feedbacks and varied needs. It truly is a mammoth task!” says Ms Chan. “Each feedback, whether about the neighbourhood amenities or bus services, is taken seriously.”

Ms Chan, who has been living in Chua Chu Kang for the past 10 years, recalls the time she submitted a request for a ramp to be built from her block to the carpark. “I had a difficult time with my twins on their strollers, as the carpark was linked to our block only by a flight of steps,” says Ms Chan. “Within a month, a ramp was built! I was, and still am, very appreciative of

the attentiveness and efficiency of our Town Council.”

The neighbourhood has gone through many other enhancements, besides the ramp that Ms Chan speaks so fondly of. “Some changes are big, while others more subtle. I would not have been aware of them had I not come forward as a volunteer,” she says. But what has remained the same is the zest and dedication shown by fellow volunteers, who according to Ms Chan, are a lot more active than she is. “The extra hours and effort they put in every week to get the residents to come together and build bonds are simply inspiring,” says Ms Chan. “They really believe and embody that *kampung* spirit.”



Ms Chan at the mega playground at Choa Chu Kang Avenue 3, where her children love to play.

If you will like to share your memory of Chua Chu Kang, or a favourite place in your estate, write in to corpcomms@ccktc.org.sg. Featured residents will each receive a goodie bag worth \$50.

QUIZ

READ AND WIN!

Stand a chance to walk away with a goodie bag worth \$50, inclusive of a \$20 CapitaLand Voucher.

Step 1: Read this newsletter.

Step 2: Test your knowledge and complete this crossword puzzle.

Step 3: Submit your answers, with your name, NRIC number, address and contact details to:

Chua Chu Kang Connects Quiz

Chua Chu Kang Town Council
c/o Corporate Communications Department
309 Choa Chu Kang Ave 4
#02-02 Choa Chu Kang Centre
Singapore 680309

Closing date: 30 June 2018

Terms & Conditions: Contest is open to all residents of Chua Chu Kang GRC and Hong Kah North SMC except staff members of Chua Chu Kang Town Council and their immediate families. • The judges’ decisions are final. • Winners will be notified by post. • Only entries using the original forms will be accepted. • Only one entry per household is allowed.

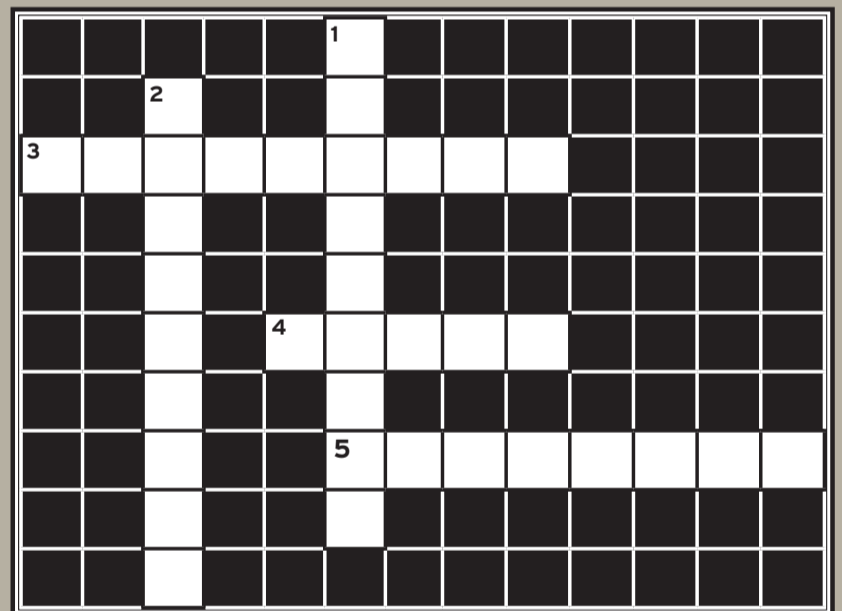
CLUES

Down

- 1) Do not remove or _____ the Permit to Operate (PTO) that are installed in lifts.
- 2) With the new BTO estates, residents now have a wide range of _____, such as food courts, supermarkets and shops.

Across

- 3) _____ events are a great way for residents to connect and have fun with their families and neighbours.
- 4) The “many-hands” approach by residents, Residents’ Committees (RC) and the Town Council was on full display in the annual My _____ Sparkles competition.
- 5) Under the Selective Lift Replacement Programme (SLRP), old lifts will be replaced with modern lifts that provide greater _____ and energy efficiency.



CONGRATULATIONS

Chan Kiew Feng
SXXXX155G

Cheryl Yeo Pei Fang
SXXXX365G

Chow Yong Foo
SXXXX887F

Hah Wen Yee
SXXXX148Z

Haryati Binte Jumahat
SXXXX244B

Liyanna Bte Johan
SXXXX282Z

Muhamad Akif Bin Kamsani
TXXXX762B

Nora Diana Binte Hadi
SXXXX938J

Bridgette Robyn Tang May Yen
SXXXX119G

Jindar Kaur
SXXXX100E

DECEMBER 2017 QUIZ WINNERS



Connects is published by
**Chua Chu Kang
Town Council**

Hotline: 6569 0388
Email: info@ccktc.org.sg
Website: www.ccktc.org.sg

Main Office
Blk 309 Choa Chu Kang Ave 4
#02-02 Choa Chu Kang Centre
Singapore 680309
Fax: 6764 7208

Nanyang Branch
Blk 952 Jurong West St 91
#01-725
Singapore 640952
Fax: 6791 7372

Bukit Gombak Branch
Blk 524 Bukit Batok St 52
#01-769
Singapore 650524
Fax: 6569 1990

EMSU Hotline: 1800 275 5555
(24-hr service for emergencies like lift failures, electricity or water supply breakdowns.)

Communications & Service Quality Committee:

Chairman:
Mr Chan Siang Heng Joe, PBM
Vice Chairman:
Mr Lim Wei Wah
Members:
Mr Rennie Lim Yut Ooi
Ms Serene Mak Wai Ling
Mr Eric Goh Wee Tiong
Mr Thiruprakassh S/O Suppiah
Secretary: Ms Vanessa Low