

Keat Hong CONNECTS



MCI (P) 071/07/2018

MARCH 2019

CLEAN AND GREEN SINGAPORE!

Celebrating Tree Planting Day at Keat Hong with our residents.



HAPPENINGS

5-Year Master Plan for Chua Chu Kang GRC and Hong Kah North SMC 03



FOCUS

An Active, Vibrant and Revitalised Keat Hong 2020 04



SOCIAL SPACES

Green excursions 06



DEDICATIONS

Neighbourhood heroes 08

Together, a better home!





TOGETHER, LET'S BUILD A BETTER HOME

I thank all Chua Chu Kang GRC and Hong Kah North SMC residents for your active participation, collaboration and continued support of the Town Council. I am also grateful to the various government agencies, grassroots organisations and community partners for their dedication and co-operation.

The Town Council will continue to leverage on technology to innovate and deliver high standards of municipal services efficiently and effectively. We will also bring exciting upgrading and infrastructure improvement development projects to our estates to enhance our residents' quality of life.

亲爱的居民和朋友们，

在此，我向大家致以最真挚的问候！

建设美好家园，打造充满魅力的市镇

本期的简报中，我们很高兴与您分享多个翻新及改建项目的进展详情。

确定于2016至2020年的蔡厝港五年市镇总体规划，我们已提前实现大部分的发展项目，其主要用意旨在：

- 提升各住宅区之间的衔接性。
- 通过绿化来美化居民的居住环境。
- 从新为我们的社区注入新的元素，提升我们的邻里设施。如翻新儿童游乐场，增设更多有盖走廊，新建多代同堂的休闲设施。
- 新增设施将为年长人士与小孩提供多元化的选择。

共创优雅繁荣的社区

为了鼓励居民们之间的互动，蔡厝港市镇理事会鼎力支持各相关部门所举办的社区活动，并热情邀请居民们积极参与其中。我们也希望通过每年的植树节与组屋清洁比赛等绿化环保活动，提高居民们对生活环境，以及爱护公共设施的意识。

齐心协力，迈向未来

随着时代的进步，科技的日新月异，这些新技术的诞生推动了各个领域的发展。我们将有效的利用新科技，新技术为居民们提供更完善的服务体系。

让我们共同建设一个更美好的家园。



Dear Residents and Friends,

Warmest greetings to all of you!

A CONNECTED, ACTIVE AND REJUVENATED TOWN

In this issue of *Connects*, we are pleased to share with you the progress of our various upgrading and improvement projects.

These efforts are in line with our 5-Year Master Plan for Chua Chu Kang Town (Year 2016 to 2020) that seeks to:

- Improve connectivity within estates.
- Beautify our living environment with greenery.
- Revitalise our residential precincts with new and upgraded amenities such as parks, playgrounds, covered linkways, as well as multi-generational leisure and fitness facilities for all ages, especially the elderly and the young.
- Build more vibrant communal spaces for all to bond.



அன்பார்ந்த குடியிருப்பாளர்கள் மற்றும் நண்பர்களுக்கு,

உங்கள் அனைவருக்கும் இனிய நல்வாழ்த்துக்கள்!

ஒரு இணைக்கப்பட்ட, சுறுசுறுப்பான மற்றும் புத்துயிருட்கட்டப்பட்ட நகரம்

Connects - இன் இந்த இதழில், நமது பல்வேறு மேம்பாடு மற்றும் முன்னேற்றத் திட்டப்பணிகளின் வளர்ச்சி நிலை குறித்து உங்களுடன் பகிர்ந்துகொள்வதற்கு மகிழ்ச்சியடைகிறோம்.

இந்த முயற்சிகள் கீழ்க்கண்ட நோக்கங்களுக்காக சுவா து காங் நகரத்திற்கான எங்களின் 5-ஆண்டு பெருந்திட்டத்துடன் (2016-ஆம் ஆண்டு முதல் 2020-ஆம் ஆண்டு வரை) இணைக்கிட்டுக் கொள்ள:

- குடியிருப்புப்பேட்டைகளுக்குள் இணைப்புத்தன்மையை மேம்படுத்துவது.
- நமது வாழ்க்கைச் சூழலைப் பசுமைவெளியுடன் அழகாக்குவது.
- பூங்காக்கள், விளையாட்டு மைதானங்கள், மேற்கூரையிடப்பட்ட இணைப்புவுழிகள் மட்டுமின்றி, பல தலைமுறைப் பொழுதுபோக்கு மற்றும் உடற்பயிற்சி வசதிகளைப் போன்ற புதிய மற்றும் மேம்படுத்தப்பட்ட வசதிகளுடன் நமது குடியிருப்பு வட்டாரங்களுக்கு புத்துயிருட்டுவது. இது குறிப்பாக மூத்தோர்கள் மற்றும் இளையர்கள் உள்ளிட்ட எல்லா வயதினருக்கும் ஏற்றதாக இருக்கும்.

A BEAUTIFUL, INCLUSIVE AND GRACIOUS COMMUNITY

Our Town Council actively supports community outreach and engagement to foster bonding among residents. We also hope to inspire residents to care for and protect our common spaces and living environment through clean and green campaigns such as Tree Planting Day and My Block Sparkles.

MOVING FORWARD TOGETHER

We will continue to leverage on technology and innovations to deliver high standards of municipal services efficiently and effectively.

Together, let's build a better home — a beautiful, inclusive and gracious community for all!

Low Yen Ling

Mayor of South West District
Senior Parliamentary Secretary
Ministry of Education & Ministry of Manpower
MP for Chua Chu Kang GRC (Bukit Gombak)
Chairman of Chua Chu Kang Town Council



• எல்லோரும் கூடி வாழ்வதற்கான உயிர்த்துடிப்பான சமூக இடங்களை உருவாக்குவது.

அழகிய, அனைவரையும் உள்ளடக்கிய மற்றும் கனிவுமிக்க ஓர் சமூகம்

குடியிருப்பாளர்களுக்கு மத்தியில் பிணைப்பை உருவாக்குவதற்கு நமது நகர மன்றம் சமூகத் தொண்டுகளையும் ஈடுபாட்டையும் துடிப்புடன் ஆதரிக்கிறது. மரக்கன்று நட்டும் நாளும் மற்றும் எனது புளோக் ஸ்பார்க்கல்ஸ் போன்ற சுகாதார மற்றும் பசுமை இயக்கங்கள் வாயிலாக நமது பொது வெளிகளையும் வாழ்க்கைச் சூழலையும் அக்கறையுடன் பாதுகாப்பதற்கு நாங்கள் குடியிருப்பாளர்களுக்கு ஊக்கமளிப்பதற்கும் குறிக்கோள் கொண்டிருக்கிறோம்.

ஒன்றிணைந்து முன்னேறிச் செல்லுவது

உயர்தரமான நகராட்சி சேவைகளை ஆற்றலுடன் வழங்குவதற்கான தொழில்நுட்பம் மற்றும் புதுமைக் கண்டுபிடிப்புகளை நாங்கள் தொடர்ந்து ஊக்குவிப்போம்.

நம் அனைவருக்காகவும் நாம் அனைவரும் ஒன்றிணைந்து ஓர் அழகான, அனைத்தும் உள்ளடங்கிய மற்றும் கருணைமிக்க சமூகமாகத் திகழும் ஒரு சிறந்த இல்லத்தை உருவாக்குவோம்!



Para Penduduk dan Rakan Yang Dihormati,

Salam sejahtera kepada semua!

SEBUAH BANDAR YANG TERHUBUNG, AKTIF DAN DIPERTINGKAT

Dalam keluaran *Connects* kali ini, kami gembira untuk berkongsi bersama anda tentang kemajuan pelbagai projek peningkatan dan penambahbaikan kami.

Usaha-usaha ini selaras dengan Pelan Induk 5 Tahun untuk Bandar Chua Chu Kang (Tahun 2016 hingga 2020) yang bertujuan untuk:

- Meningkatkan kesalinghubungan di dalam kawasan estet.
- Memperindahkan persekitaran hidup kita dengan kehijauan.
- Menyegarkan kawasan kediaman kita dengan kemudahan baru yang dipertingkatkan seperti taman, taman permainan, laluan penghubung berbumbung, serta kemudahan riadah dan kecergasan berbilang generasi untuk semua peringkat usia, terutama sekali bagi warga emas dan golongan muda.
- Membina lebih banyak ruang masyarakat yang menarik untuk para penduduk mengeratkan hubungan.

SEBUAH MASYARAKAT YANG INDAH, INKLUSIF DAN BERHEMAM

Majlis Bandar kami menyokong usaha pendekatan dan penglibatan masyarakat untuk memupuk hubungan antara penduduk secara aktif. Kami mahu menggalak para penduduk untuk menjaga serta melindungi ruang bersama dan persekitaran hidup kita melalui kempen bersih dan hijau seperti Hari Menanam Pokok dan Blok Saya Bersinar.

MAJU KE HADAPAN BERSAMA-SAMA

Kami akan terus memanfaatkan teknologi dan inovasi untuk memberikan perkhidmatan perbandaran bertaraf tinggi secara cekap dan berkesan.

Bersama-sama, kita bina kediaman yang lebih indah — masyarakat yang baik, inklusif dan berhemam untuk semua!

A CONNECTED, ACTIVE AND REJUVENATED TOWN

In August 2015, we launched a **5-Year Master Plan for Chua Chu Kang GRC & Hong Kah North SMC Year 2016 to 2020**. A major focus of the Masterplan is connectivity around the estate. Other initiatives include beautifying our living environment with greenery, revitalising our residential precincts with new amenities such as parks, playgrounds and sheltered linkways, as well as improvements to existing infrastructure. The majority of these projects have been completed or are in progress.



8,324 metres of Walk2Ride linkways and widened footpaths / cycling paths



Walk2Ride Path Along Choa Chu Kang Ave 4

5,602 units in total will benefit from the Home Improvement Programme (HIP)



A completed HIP at Block 536 Bukit Batok St 52, Bukit Gombak Division - Chua Chu Kang GRC

491 blocks have undergone Repair & Redecoration (R&R)



Completed R&R at Blocks 1 to 7 Teck Whye Crescent, Chua Chu Kang Division - Chua Chu Kang GRC

131 blocks have benefitted from the Neighbourhood Renewal Programme (NRP)



Ongoing NRP at Blocks 711 to 732 Jurong West 71/72, Ave 5, Nanyang Division - Chua Chu Kang GRC

Major transportation infrastructure works completed:

- Choa Chu Kang Bus Interchange
- Joo Koon Interchange
- Downtown Line (Bukit Panjang, Cashew, Hillview)
- Upper Bukit Timah Flyover



Completed Choa Chu Kang Bus Interchange

4 parks, **44** playgrounds and **48** fitness corners



Completed Family Hub at Bukit Batok Street 32, Hong Kah North SMC

115 lifts replaced or newly-built



Completed Lift Replacement Programme at Block 434 Choa Chu Kang Ave 4, Keat Hong Division - Chua Chu Kang GRC





ZAQY MOHAMAD
 MINISTER OF STATE IN THE MINISTRY OF NATIONAL DEVELOPMENT AND THE MINISTRY OF MANPOWER,
 MP FOR CHUA CHU KANG GRC (KEAT HONG)

"Dear residents and friends,
 The Town Council completed **98 improvements** in Keat Hong in the past 3 years, including 17 covered linkways and porches, 6 playgrounds, 10 fitness corners, and 3 sports courts. Currently, we are adding jogging tracks, playgrounds, fitness corners and other community facilities across the Town. From 2019 to 2020, we plan to build more community facilities and new lifts. **The Neighbourhood Renewal Programme for 53 blocks will take place at the same time.**

I thank all residents for your active participation and support. I am also grateful to the various government agencies, grassroots organisations and community partners for their dedication and co-operation. **Together, let's build a better home, a beautiful, inclusive and gracious community for all!**"

MEET-THE-PEOPLE SESSION

Every Monday, 8pm, Keat Hong
 (except public holidays)
Blk 353 Choa Chu Kang Central
 #01-313
 Singapore 680353

Tel: 6763 1986
 Fax: 6764 0982

Email: mp@keathong.sg
 Facebook:
www.facebook.com/zaqym



AN ACTIVE, VIBRANT AND REVITALISED @ KEAT HONG 2020

Keat Hong 2020 envisions an active, vibrant and revitalised residential hub branded with the latest developments and facilities for our beautiful, inclusive and gracious community.



The Town Council completed **98 improvement projects** in Keat Hong in the past 3 years. These include:

17
 covered linkways
 and porches

10
 fitness corners

6
 playgrounds

3
 sports courts

Upcoming
124
 lifts

COMMON FACILITIES



Keat Hong Community Club Officially opened on 5 May 2018, it features an 18-lane bowling alley, a 24-hour gym, a black box auditorium, a multi-purpose hall, basketball courts, an enrichment centre and the National University Hospital (NUH)'s Family Medicine Clinic.



SAFRA Clubhouse Nestled within Choa Chu Kang Park, the upcoming clubhouse will provide residents with new fitness, recreational and dining facilities.

TRANSPORTATION



MRT Sound Barrier Construction works for a noise barrier installation have commenced to reduce noise generated from trains running along the MRT track.

Jurong Region Line (JRL) The upcoming 24 km-long JRL will add 24 stations to the existing rail network, including three interchange stations at Boon Lay, Choa Chu Kang and Jurong East MRT stations.

Choa Chu Kang Bus Interchange On 16 December 2018, the interim bus interchange was opened with smart technology aimed at making commuters' journeys safer and more comfortable.

Bus Service 991 Since 30 September 2018, residents have been taking the trunk service to get to the market in Bukit Gombak, as well as Bukit Batok MRT station and bus interchange.

REPAIRS & REDECORATIONS (R&R) PROGRAMME



The Town Council performs a series of repairs, repainting and replacement works on a cyclical basis in order to upkeep our estates in good condition. This ensures that residents living in older estates enjoy a level of amenities, comfort and convenience that is on par with those found in newer blocks.

COMMUNITY IMPROVEMENT WORKS

To enhance connectivity in our neighbourhood, 10 covered linkways and drop-off porches have been completed in the last three years. Nine fitness corners and playgrounds have also been constructed. With the introduction of these fitness facilities, we hope that residents can adopt an active and healthy lifestyle, as well as use the space to bond with each other.



NEIGHBOURHOOD RENEWAL PROGRAMME (NRP)



NRP Blocks 271 to 295 Choa Chu Kang Avenue 2/3

Adventure Park @ Rejuvenated Tembusu Park
The exciting adventure park will feature various play and fitness facilities for residents of all ages.

Blocks 401 to 428 Choa Chu Kang Avenue 3/4

Mega Active Lifestyle Hub
The new community space will feature innovative and versatile equipment and fitness facilities to benefit people of all ages.



LIFT REPLACEMENT PROGRAMME (LRP)



Works are ongoing and a total of 68 old lifts will be replaced with new lifts by Q4 2020. The Ministry of National Development (MND) announced that another 64 lifts in Keat Hong will be replaced within the next four to five years. The blocks that are due for lift replacement include:

- Block 280 Choa Chu Kang Ave 3 – Lifts A and B
- Block 281 Choa Chu Kang Ave 3 – Lifts A and B
- Block 283 Choa Chu Kang Ave 3 – Lifts A, B and C
- Block 285 Choa Chu Kang Ave 3 – Lifts A and B
- Block 286 Choa Chu Kang Ave 3 – Lifts A and B
- Block 289 Choa Chu Kang Ave 3 – Lifts A and B
- Block 290 Choa Chu Kang Ave 3 – Lifts A and B
- Block 291 Choa Chu Kang Ave 3 – Lifts A and B
- Block 293 Choa Chu Kang Ave 3 – Lifts A and B
- Block 306 Choa Chu Kang Ave 4 – Lift A
- Block 307 Choa Chu Kang Ave 4 – Lift A
- Block 401 Choa Chu Kang Ave 3 – Lifts A and B

- Block 402 Choa Chu Kang Ave 3 – Lifts A and B
- Block 404 Choa Chu Kang Ave 3 – Lifts A and B
- Block 405 Choa Chu Kang Ave 3 – Lifts A and B
- Block 406 Choa Chu Kang Ave 3 – Lifts A and B
- Block 407 Choa Chu Kang Ave 3 – Lifts A and B
- Block 408 Choa Chu Kang Ave 3 – Lifts A and B
- Block 409 Choa Chu Kang Ave 3 – Lifts A and B
- Block 410 Choa Chu Kang Ave 3 – Lifts A and B
- Block 411 Choa Chu Kang Ave 3 – Lifts A and B
- Block 412 Choa Chu Kang Ave 3 – Lifts A, B and C
- Block 413 Choa Chu Kang Ave 3 – Lift A and B
- Block 417 Choa Chu Kang Ave 4 – Lift A
- Block 420 Choa Chu Kang Ave 4 – Lift B
- Block 421 Choa Chu Kang Ave 4 – Lifts A and B
- Block 422 Choa Chu Kang Ave 4 – Lifts A and B
- Block 423 Choa Chu Kang Ave 4 – Lifts A and B
- Block 425 Choa Chu Kang Ave 4 – Lifts A and B
- Block 426 Choa Chu Kang Ave 4 – Lifts A and B
- Block 427 Choa Chu Kang Ave 4 – Lifts A and B
- Block 430 Choa Chu Kang Ave 4 – Lifts A and B
- Block 439 Choa Chu Kang Ave 4 – Lifts A and B

GREEN EXCURSIONS

Get close to nature with your family, friends and neighbours.

Thinking about where to go for your next weekend of fun and bonding with your family? For a change, why not spend time together exploring the natural spots that Chua Chu Kang has to offer? These recreational green spaces are open to the public and serve to foster appreciation for Singapore's diverse flora and fauna.



Choa Chu Kang Park



PHOTO: JURONG FROG FARM

FIND WELLNESS IN NATURE

Enjoy the calming effects of nature at the newly-launched Choa Chu Kang Park's 900-sqm Therapeutic Garden. Designed to bring about restorative effects to our mental well-being and provide stress relief, the garden features plant species that are fragrant, coloured and textured, as well as edible or medicinal, including herbs and spices.

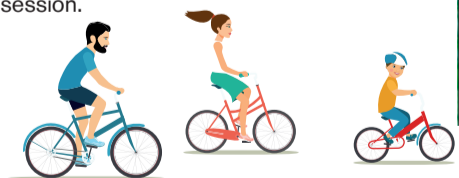
What we like: Choa Chu Kang Park's multi-generational facilities are great for families with seniors and wheelchair-bound members. There are also a number of fitness stations, four playgrounds, a small skate plaza and an eatery.



PEDAL TOGETHER

Cycling is a great family activity that both young and old can enjoy. The next time you decide to cycle as a family, get onto the 5.4 km-long Choa Chu Kang Park Connector. One of the most popular stretches of the route is the 1-km scenic path along Brickland Road. Featuring lush greenery and bright and colourful flowering plants that bloom all year round, it showcases the best of western Singapore's flora.

What we like: The route meanders through Chua Chu Kang and you can stop by the precinct's popular eateries for a break and chit-chat session.



PHOTOS: HOLLYWOOD VEGGIES

DRAWING CONTEST



Theme: My Beautiful & Gracious Home Town

We invite our young residents aged 12 years old and below (between Nursery and Primary 6) to draw their impression of a beautiful and gracious home town in Chua Chu Kang GRC and Hong Kah North SMC, with places-of-attraction and social infrastructure such as communal halls, parks, themed playgrounds and exercise fitness corners for all, both elderly and young.

Submit your drawings to:
Chua Chu Kang Town Council
 Main Office Blk 309 Choa Chu Kang Ave 4
 #02-02 Choa Chu Kang Centre
 Singapore 680309.

Closing date: 31 May 2019

Please include the following details at the back of your drawing:

Full Name	
School Name	
Home Address	
Parent's Name	
Parent's Contact	



GET A BIRD'S EYE VIEW

Hugging the northwestern coast of Singapore, the sprawling Kranji Bird Marshes is home to more than 170 species of birds. The best way to see the 56.8-hectare park is from above. To do this, take a leisurely 1-km walk towards its centre, where the Raptor Tower is located.

For an equally enriching wildlife experience, bring the family to Sungei Buloh Wetland Reserve, which is Singapore's first ASEAN Heritage Park.

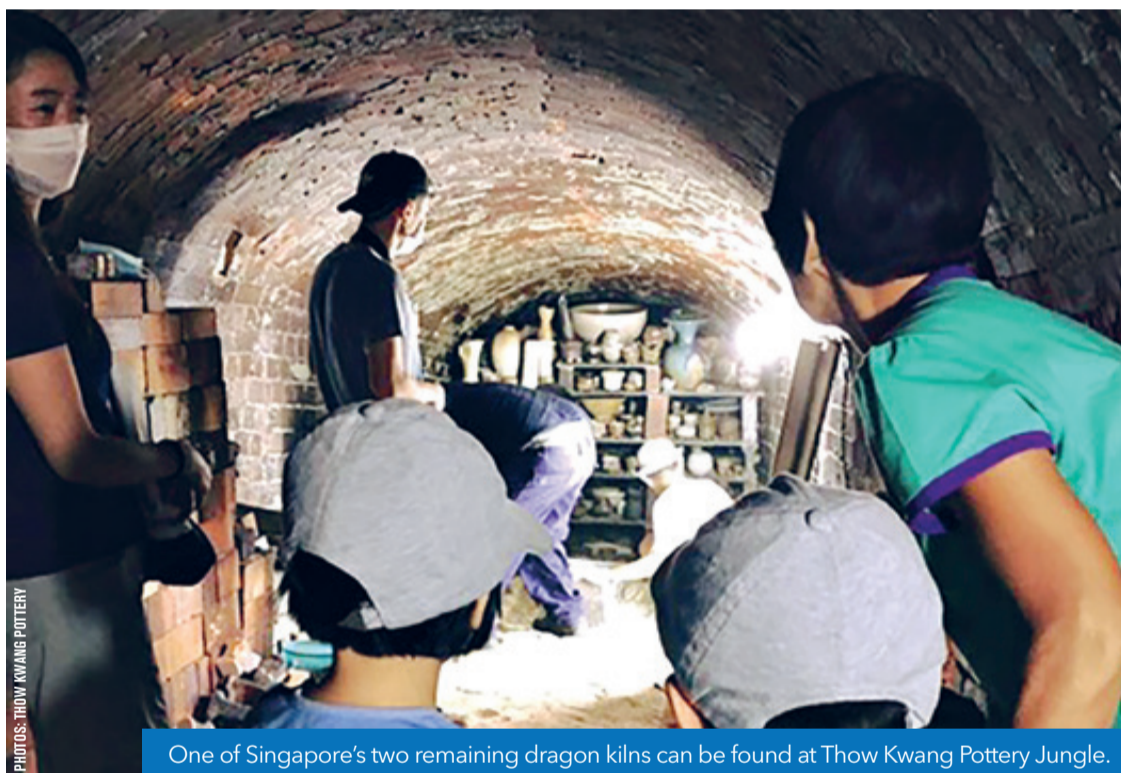
What we like: From 10.5m-high Raptor Tower, try spotting some of the rarer birds that call the marshes home. Among them are the Changeable Hawk and White-bellied Sea Eagle. Be sure to bring a pair of binoculars and your camera too!



A vantage point at Kranji Marshes.



Learn to differentiate between male and female frogs at Jurong Frog Farm.



One of Singapore's two remaining dragon kilns can be found at Thow Kwang Pottery Jungle.



Enjoy freshly-picked fruits and vegetables at Bollywood Veggies.

EMBARK ON FARM HOPPING

Have you explored farm-hopping around Lim Chu Kang, Neo Tiew Crescent and Sungei Tengah Road? There are numerous farms open to the public, including Kin Yan Agrotech (kinyan.sg) that grows pesticide-free mushrooms and wheatgrass, Jurong Frog Farm (jurongfrogfarm.com.sg) and Bollywood Veggies (bollywoodveggies.com).

You can also enjoy a farm-style staycation at Gardenasia (gardenasia.com) or Gallop Kranji Farm Resort (gallopresort.com), and visit many farms and nurseries within its vicinity.

What we like: At 10.30am every day (except Tuesdays), visitors can watch the goats being milked at Hay Dairies (haydairies.com.sg). It promises to be a bleating good time!

THE ART OF POTTERY

The ancient art of pottery lives on at Singapore's two remaining pottery kilns in Chua Chu Kang. Built in the 1940s and 1950s, these pottery ovens, which originated from the southern part of China, are known as dragon kilns. The kiln is characterised by its long and thin design that resembles a dragon's neck.

The two kilns at Jalan Bahar serve different purposes. Thow Kwang Pottery Jungle (thowkwang.com.sg) is used as a pottery business, while Jalan Bahar Clay Studios (jbcass.com) is a ceramic studio and education centre. Visitors can swing by both to better understand how Chinese ceramics are made. Families can even try making pieces of art together.

REMEMBER OUR STORIES

This year marks the 200th anniversary of Sir Stamford Raffles' arrival in Singapore in 1819, which led to the founding of modern Singapore. We invite all residents to join us in commemorating our nation's bicentennial milestone through the reflection of our life stories.

In the beginnings, Chua Chu Kang (derived from the Teochew word 'kang chu' which means the plantation owners) was vastly occupied by many plantations known as Kangchu. Pepper and gambier were planted along the banks of Chua Chu Kang ('kang' means river. The clan name of the first headman in charge of the plantations in the area was 'chu').

In 1977, Chua Chu Kang's first neighbourhood was completed at Teck Whye Avenue. Let's reminisce on the good old times. You are invited to submit your favourite photo and in 100 words, to tell us your memorable life moment taken at a specific location / place-of-attraction / landmark in Chua Chu Kang such as the old *attap* houses, street hawkers and *kampungs*, which bring a touch of nostalgia.

Email your photo and story, titled **"REMEMBER OUR STORIES"** to corpcomms@ccktc.org.sg



Please include the following details in your submission:

Full Name _____
 Home Address _____
 Contact _____
 Photo (include year the photo was taken) _____
 Your story (in 100 words) _____

NEIGHBOURHOOD HEROES



A Big Thank You to the daily guardians of our estates.

"Recently, I noticed that the cleaners at Blk 837 Jurong West Street 81 have changed. I would like to compliment them for a job well done. They are very hardworking and polite."

ALVIN



"I would like to thank our estate cleaning team, especially Mr Goh Bing Da, for its swift action on my feedback regarding the cleanliness of the common corridors and lifts. Mr Goh has been very competent and his work efficiency is commendable. He is a very capable and critical member of the Town Council team. I am very glad to have him oversee our housing issues; his assistance always makes my family and our neighbours feel more assured and at ease."

VICTORIA TAN
BLOCK 411, BUKIT BATOK WEST AVENUE 4

"I would like to express my thanks and appreciation to the Town Council (TC)'s Property Manager and his team for their efforts in resolving my problem. An officer and two workers came to my home at 7.30am as promised. The workers did a professional and wonderful job in a short span of time – they not only removed the potted plant but cleared all the overgrown vegetation around the air-conditioner compressor."

BASEER SHAMSUDIN
BLK 461, CHOA CHU KANG AVENUE 4

"On behalf of Keat Hong Pride resident Roger Toh, I would like to express my heartfelt thanks for the Town Council (TC)'s prompt response in fixing his faulty letterbox lock. Roger commends TC for its professional service, as well as the proper follow-through. Despite the keys initially not matching, he appreciates TC's efforts in rectifying the problem without delay."

LEOW GENG HUI
BLK 804B KEAT HONG CLOSE



"I would like to compliment our block cleaner for his good work. Our floors are well-swept daily, including the corner next to the rubbish chute where water is discharged. Previously, a piece of rubbish could be at the same spot for days. We are very glad to have the present cleaner doing a good job and we feel that he deserves praise."

CHUNG BAN HENG FRANK
BLK 156 JALAN TECK WHYE



These compliments have been edited for clarity and length.

NATIONAL DAY AWARDS 2018

The National Day Awards recognise individuals for their outstanding contributions to Singapore. Last year, 4,632 individuals in 23 award categories received the honours. Chua Chu Kang Town Council extends our heartfelt congratulations to all recipients from our constituencies.

The Public Service Star (Bar) [Bintang Bakti Masyarakat (Lintang)]

DR KEE WEI HEONG, JP, BBM (L)
Honorary Chairman
Bukit Gombak CCC

The Public Service Star [Bintang Bakti Masyarakat]

DR LIM LAN YUAN, BBM (L)
Principal Master Mediator
Community Mediation Centre
Chairman, Town Councillor, Strategy & Innovation Committee

MR ROBIN NG CHEE CHUAN, BBM
Chairman
Hong Kah North CCC

The Public Service Medal [Pingat Bakti Masyarakat]

MDM ALICE FOO SIEW HA, PBM
Vice-Chairperson
Hillview CC WEC

MR EDWIN JOSEPH JESUNESAN, PBM
Chairman
Keat Hong Zone 6 RC

PUAN HAJJAH HASNAH BTE MASNOD, PBM
Vice-Chairperson
Chua Chu Kang Zone 1 RC

MR LIM KIANG TECK, PBM
Vice-Chairman
Hillview CCMC

MDM LIM YEE PEI, PBM
Chairperson
Nanyang Zone 3 RC
Town Councillor, Residents Liaison & Special Projects Committee

MR MAK HON WAH, PBM
Chairman
Chua Chu Kang Zone 7 RC
Town Councillor, Residents Liaison & Special Projects Committee

MR PERUMAL ARUMAI CHANDRAN, PBM
Chairman
Keat Hong CC IAEC

MDM VEERAMMAL D/O ARUMUGAM, PBM
Chairperson
Nanyang CC IAEC



WRITE TO US

WANT TO THANK OUR DAILY GUARDIANS IN CHUA CHU KANG GRC AND HONG KAH NORTH SMC FOR A JOB WELL DONE? EMAIL YOUR NOTE TO corpcomms@ccktc.org.sg

QUIZ

READ AND WIN!

Stand a chance to walk away with a \$50 CapitaLand Voucher. There are five vouchers to be given away.

Step 1: Read this newsletter.

Step 2: Test your knowledge and complete this quiz.

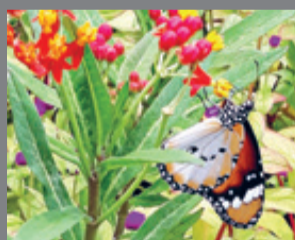
Step 3: Submit your answers, with your name, NRIC number, address and contact details to:

Chua Chu Kang Connects Quiz

Chua Chu Kang Town Council
c/o Corporate Communications Department
Blk 309 Choa Chu Kang Ave 4
#02-02 Choa Chu Kang Centre
Singapore 680309

Closing date: 31 May 2019

Terms & Conditions: Contest is open to all residents of Chua Chu Kang GRC and Hong Kah North SMC, except staff members of Chua Chu Kang Town Council and their immediate families. • The judges' decisions are final. • Winners will be notified by post. • Only entries using the original forms will be accepted. • Only one entry per household is allowed.



1 The 5-Year Master Plan for Chua Chu Kang Town Year 2016 to 2020 was launched in August 2015, with a major focus on connectivity around the estate.

A: True B: False

2 Improvements made under the Neighbourhood Renewal Programme (NRP) include construction of themed and integrated inclusive playgrounds and senior citizens' fitness corner zones for residents to enjoy.

A: True B: False

3 Choa Chu Kang Park's 500-sqm Therapeutic Garden features plant species that are fragrant, coloured and textured, as well as those that are edible or medicinal, including herbs and spices.

A: True B: False

Congratulations



QUIZ WINNERS (APRIL 2018)

BUKIT GOMBAK
LIN MING LI
SXXXX874C

CHUA CHU KANG
MUHAMMAD FAIRUZ
ABDULLAH
SXXXX865J

HONG KAH NORTH
JEETENDRA
SARADHURAM
SXXXX499D

KEAT HONG
S.PAVAMESVAMY
SXXXX003G

NANYANG
SITI NURRAHMAH
BINTE SELAMAT
TXXXX974A

Connects is published by



Hotline: **6569 0388**

Email: info@ccktc.org.sg

Website: www.ccktc.org.sg

Main Office
Blk 309 Choa Chu Kang Ave 4
#02-02 Choa Chu Kang Centre
Singapore 680309
Fax: 6764 7208

Nanyang Branch
Blk 952 Jurong West St 91
#01-725
Singapore 640952
Fax: 6791 7372

Bukit Gombak Branch
Blk 524 Bukit Batok St 52
#01-769
Singapore 650524
Fax: 6569 1990